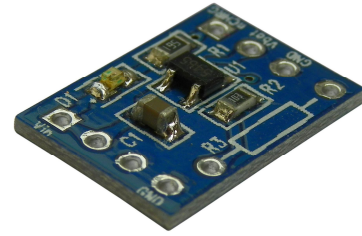


Li-ion Battery Charger

Features

- Built with LTC4054 or compatible.
- Programmable Charge Current Up to 800mA
- Alternative through-hole footprint provided for easy of charge current programming
- Standard 0.1" pin pitch
- Only 0.63" X 0.43" in size



Schematic

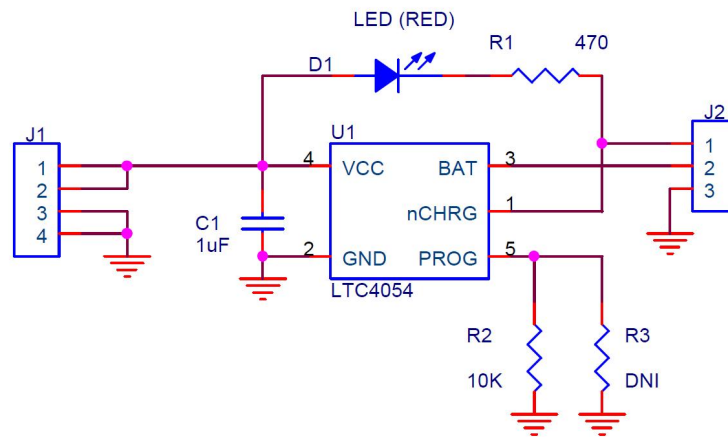


Fig. 1

Connection

Please see Fig. 2 for correct connection. **Do not apply voltage higher than 6.5V to the board!**

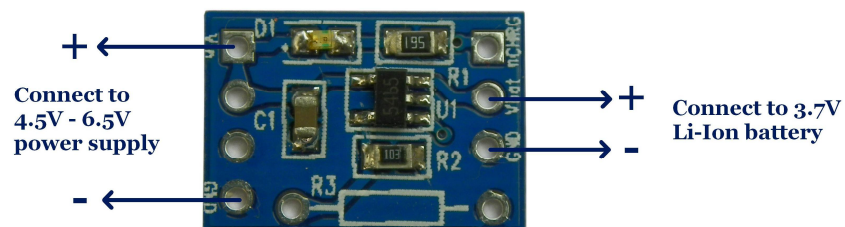


Fig. 2

Programming Charge Current

The charge current is programmed using a single resistor from the PROG pin to ground. The battery charge current is 1000 times the current out of the PROG pin. The program resistor and the charge current are calculated using the following equations:

$$R_{\text{PROG}} = 1000V / I_{\text{CHR}}$$

The board shipped with R_{PROG} (R2) being 10K, which sets charge current to 100mA. If different charge current is required change R2 based on the equation above. If SMD resistor is not available remove R2 and use through-hole resistor at footprint R3.

Revision History

Version	Date	Descriptions
01	2011.12.31	First created